

TOGETHER.

2022 ANNUAL REPORT




**Community
Foundation**
OF GREATER DUBUQUE

Molly Casey and her Boys & Girls Club colleagues come **TOGETHER** to support families like Jacqueline Hunter and Mason Gilbert. [Learn more on page 4.](#)



Dear Community Members,

It's our 20th anniversary, and we are excited to celebrate the powerful impact we are making in our community **TOGETHER.**

For two decades, we have been at the forefront of community transformation in the Dubuque region. From brain health to grade-level reading, we have identified critical, complex challenges and worked to find lasting solutions.

In this report, we will let you in on the secret to our success: The partnership and commitment of people like you. Collaboration builds a strong region, and the trusting relationships we have built across geography, demographics and organizations have made a positive difference in the lives of many.

Twenty years is a significant span of time. Since we opened our doors in 2003, we've seen remarkable progress. Dubuque's historic downtown and Millwork District are being rejuvenated. The Bee Branch Creek Flood Mitigation Project is saving people and property while creating an opening for neighborhood investment. Our riverfront has become a nationally renowned destination.

At the same time, 20 years feels like just the beginning. We can't imagine what changes are in store for the next 20 years, 50 years and beyond. One thing is certain, though. Whatever challenges or opportunities arise, we will meet them head on. We are rooted in Dubuque and we are here forever.

We couldn't be more grateful that you are on this journey with us. As you read this report, you'll have a chance to reflect on where we've been and imagine where we can go — **TOGETHER.**

Nancy Van Milligen
President and CEO

Terry Friedman
Board Chair



When we opened our doors in February 2003, our goal was simple: Help people give back to the Dubuque region.

Today, we continue to help people invest in our community while also doing so much more. We are strengthening Dubuque through generosity and partnerships — for today, tomorrow, and forever.

Our Mission Strengthen communities and inspire giving.

Our Vision A vibrant and inclusive Dubuque region with resources and opportunities for all.

Our Values **EQUITY AND OPPORTUNITY** | Our region's future depends on ensuring everyone can thrive.

COLLABORATION | We believe communities that come together in service of a shared vision achieve great things.

STEWARDSHIP | We believe in meeting the highest ethical and professional standards in all aspects of our work, from our relationships to our operations.

KNOWLEDGE | We are a learning organization, continuously collecting data and insights from all corners of the community.

Boosting School Success **TOGETHER.**

Our Academic Achievement Partnerships

When 9-year-old **Mason Gilbert** leaves Lincoln Elementary School at the end of the day, his mom, **Jacqueline Hunter**, knows that while she's at work, he is going to a safe, enriching environment: The Boys & Girls Club of Greater Dubuque.

"I can't imagine what his out-of-school time would be like if he didn't go to the Club every day," says Jacqueline. The family moved to Dubuque from Florida in 2019, and the Club has provided a valuable social network for the newcomers. "I like coming here to see friends," Mason adds.

Mason is one of 144 children enrolled at the Boys & Girls Club of Greater Dubuque, an organization that serves as a center for learning, character-building and general well-being. As the Club continues to expand on its work supporting local youth, it has partnered with the Community Foundation to deepen its impact.

"When those kids walk through door, we try to provide anything we can to support their success in school and in life," says Executive Director Tom Sullivan.

Children's academic achievement is a major focus of the Community Foundation's work, which makes partnerships with organizations like the Boys & Girls Club essential. The Foundation provides resources that support their programs and operations, including endowment-building expertise and its Every Child Reads network, which comprises civic and nonprofit partners collaborating to bolster success in school.

These types of partnerships are more important than ever. Nearly half of third-graders in the Dubuque public schools are not reading proficiently, a key predictor of high school graduation. While schools are helping students make progress, many students also face obstacles that schools alone aren't equipped to tackle.

"Issues like poverty, brain health and family instability impact children's learning," says Kelly Krause, Ed.D, the Community Foundation's education officer. "It takes an entire community to support our youth."

The Boys & Girls Club has long provided an array of programming focused on academics from first through 12th grade. These include STEAM (science, technology, engineering, arts and math) offerings and its Degrees to Diplomas program. It also is addressing issues like food insecurity by providing a full dinner nightly.

The Club has started a new endowment fund with the Community Foundation that will enable it to provide its members with scholarships for any type of post-high school education, from college to apprenticeships. The goal, Sullivan says, is to provide a continuum of support for youth from grade school through high school — and now beyond.

"The social-emotional support kids get here is just as important as the academic support they get in school," Jacqueline says. "I'm very thankful for the Boys & Girls Club."

Learn more dbqfoundation.org

READING PROFICIENCY
AND ABSENTEEISM IN
DUBUQUE PUBLIC SCHOOLS

35.9%

K-12 students not
proficient in reading

41.9%

Third-graders not
proficient in reading

4X

Students who do not read
proficiently by third grade
are **four times more likely**
to leave high school
without a diploma than
proficient readers*

6X

The graduation failure rate
for children who cannot
read proficiently and are
poor for at least one year is
more than six times the rate
for all proficient readers*

27.4%

K-12 students
chronically absent

*Annie E. Casey Foundation
All other data: Iowa School
Performance Profile, Iowa
Department of Education

TOGETHER WITH



BOYS & GIRLS CLUBS

FOUNDATION GRANTS BY THE NUMBERS

\$65.7M

Total amount of all grants
awarded since inception

\$5.7M

Total amount of all grants
awarded in 2022

2,400

Total number of grants
awarded in 2022

COMMUNITY IMPACT GRANTS

\$47.5K

Amount of Community
Impact Grants awarded
in 2022

\$900K

Amount of Community
Impact Grants awarded
since inception



Strengthening Nonprofits TOGETHER.



TOGETHER WITH
nami
National Alliance on Mental Illness

NAMI Dubuque's Community Impact Grant

As **Britni Farber** walks through her nonprofit's new space in downtown Dubuque, she is beaming. Britni is the executive director of NAMI Dubuque, the local affiliate of the National Alliance on Mental Illness, and since it began in the 1990s, it has hopped between church basements and other informal community gathering spaces.

Today, NAMI is growing, bringing an array of brain health resources within reach of more Dubuque residents. That growth includes a new, permanent space on Main Street as well as new staff members to support its work. Recognizing the importance of brain health services to the region's residents, the Community Foundation supported NAMI in 2022 with a \$10,000 Community Impact Grant.

"When I got word that our grant application was in consideration, I said, 'Oh my gosh, this is such a big deal! They are recognizing our efforts!'" Britni says. "It is important to us to build a relationship with the Foundation, because its role is to support nonprofits in the community. This is a relationship I can see lasting forever."

The Community Impact Grant program is designed to build the capacity of nonprofits that are addressing critical needs in the Dubuque region. Finalists receive coaching from Foundation staff that teaches them how to use data and storytelling to make effective in-person pitches to the grant committee.

For NAMI, building capacity means having the ability to recruit and train new program facilitators, launch an initiative to support veterans, expand offerings for families and children, and grow programs for young adults.

"It has been a blessing working for NAMI," says **David Lange**, one of the nonprofit's new staff members and a longtime client. "Every time I find myself helping other people, I know I'm helping myself in return."

Whereas NAMI doesn't provide clinical services, it offers an array of resources that can help people bridge gaps between brain health treatments.

"2020 was a turning point," says Britni, who began her own relationship with NAMI in 2013 when she started attending support classes and ultimately joined the board. "The pandemic forced us to start reaching people in different ways. At the same time, brain health came to the forefront as a community issue, and we responded by saying, 'We're available — let us help you.'"

Now, in an open and welcoming new space, with new eager staff members, Britni and NAMI are more than ready to help the Dubuque region.

Learn more dbqfoundation.org

We address **SYSTEMIC ISSUES
in three community areas:**

1. Academic Achievement
2. Equity and Inclusion
3. Economic Opportunity

Tackling Systemic Issues **TOGETHER.**

Our Leadership Impact

In 2005, Crescent Community Health Center was just an idea. Local leaders knew Dubuque needed health services that could reach residents facing barriers to care and pitched the idea to the community at large.

With this seed of an idea, the Community Foundation played a pivotal role bringing Crescent to Dubuque while also establishing itself as an organization at the forefront of addressing complex community challenges.

Crescent was one of 10 ideas for strengthening Dubuque that came out of the community visioning process ENVIS10N 2010, which was facilitated by the Community Foundation and Dubuque Area Chamber of Commerce in 2005.

In the wake of ENVIS10N 2010, community members stood up to support the top projects. The Schmid Family of Dubuque, for example, made a \$1.3 million gift to support a health center and help Crescent open its doors.

"ENVIS10N 2010 established us as a community leadership organization," says President and CEO Nancy Van Milligen. "It set us on a path toward bringing people together to solve problems that need resources."

Since then, the Community Foundation's impact has deepened. It has grown beyond simply a "give-through" organization. Whereas the Foundation hosts funds that support nonprofits and donors' favorite causes, it also tackles pressing issues like children's academic achievement, food insecurity, and equity and inclusion.

Plus, it continues to be a source of support for nonprofits like Crescent, which has established a close, ongoing relationship with the Foundation since ENVIS10N 2010.

"The Foundation has partnered with Crescent in many areas that have enabled our ability to more than double in size and survive the pandemic, while focusing on health inequities and enabling services for the underinsured and underserved in our region," says Crescent CEO **Gary Collins**. "One of the most remarkable attributes of the Foundation is its ability to engage the entire community in initiatives around issues like literacy and health. It deftly leverages the generous community and region with opportunities to learn about nonprofits and make a difference with a gift."

Learn more dbqfoundation.org

Our partnership with
Crescent Community
Health Center has
resulted in:

9,200

Patients served annually

130%

Increase in the number of
patients served since 2008

\$5.1M

In Crescent's endowment
fund hosted by the
Community Foundation

TOGETHER WITH



Equity Profile

BY THE NUMBERS

7

Monthly panel discussions hosted in partnership with TH Media

525

Panel Discussion Attendees

34

Community Conversations Held

350

Community Conversation Attendees

300

Community Surveys Submitted

41

Community Conversation Facilitators Trained



Building Connections **TOGETHER.**

Our Community Equity Profile

At surface level, **Art Roche** and **Temwa Phiri** might seem completely different. Raised in Detroit, Art moved to Dubuque in 1966 to attend Divine Word College. Like Art, Temwa grew up in Michigan, but only after his family emigrated from the African nation of Zambia. Temwa, too, relocated for his education, enrolling at the University of Dubuque in 2007.

Although they represent different generations and cultural backgrounds, Art and Temwa share a particular passion: Building a Dubuque where all people are welcome, included and have equitable opportunities.

“When I came here, I fell in love with this community,” Temwa says. “There are a lot of passionate people who want to make Dubuque that ‘Masterpiece on the Mississippi’ by doing their part to build relationships and connectivity.”

Art and Temwa have been active participants in the Community Foundation’s Inclusive Dubuque Network since its inception in 2012, and through that involvement, they have played pivotal roles in creating Dubuque’s Community Equity Profile.

First published in 2015, the Equity Profile draws on public data, conversations with residents, and survey results to provide snapshots of how different populations are shaped by systems like education, housing and health care. Art and Temwa have served as conversation facilitators, helping glean valuable understandings from residents of myriad racial, ethnic and cultural backgrounds.

“The Equity Profile process revealed important insights about our community,” Art says. “For example, we learned that 40% of adults in Dubuque’s Marshallese community have diabetes. That’s inequity; that’s disparity. This process is directing community leaders and organizations to those underlying issues, so we can address them in a systemic way.”

That insight about diabetes, Art and Temwa explain, led to numerous community-wide wellness initiatives, from healthy cooking classes at Convivium Urban Farmstead to coordinated health care programs for Marshallese residents at Crescent Community Health Center.

This year, the Foundation is publishing the second edition of the Equity Profile, which provides an updated picture of Dubuque’s diverse population and the experiences of its residents. Once again, Art facilitated conversations, while Temwa shared his input at multiple events. Both see Dubuque becoming a place where all people can thrive.

“We’re heading in a direction where we have closer connections with each other,” Temwa says. “There are many innovative initiatives in the community that are bridging resource gaps. We are a community that is not just supporting individuals where they are today — we are helping them go further.”

Learn more about the Community Equity Profile at dbqfoundation.org/equityprofile.

Learn more dbqfoundation.org

SMALL-TOWN DREAMS INITIATIVE BY THE NUMBERS

236 \$271_K \$375_K \$235_K

New Donors Invested

Raised to date for the
Allamakee Forever Fund

Raised to date by
Foundation of
Cornerstone Communities

Raised to date by
Dream Bellevue

\$367_K \$215_K \$171_K

Raised to date for the
LincolnWay Forever Fund

Raised to date for the **Ryan**
Community Endowment

Raised to date for the
Manchester Vitality
Endowment



Enhancing Rural Vitality **TOGETHER.**



Communities across **our seven-county region** have accepted the challenge from a generous supporter to raise matching funds and build endowments for the future.

Our Small-town Dreams Initiative

Born and raised in Manchester, Iowa, **Julie Frick** (pictured second from left) always loved her community, and a family tragedy spurred her to channel that love into positive action. After a serious accident left her son a quadriplegic, she felt so much “love, support, generosity and outpouring from the community” that she wanted to give back.

“I really believe in the town,” she says. Today, she is the volunteer chair of the **Manchester Vitality Endowment team**. They are helping Manchester, a town of 5,000 people in Delaware County, build a fund that will support community vitality for generations to come.

The Community Foundation’s Small-town Dreams Initiative is helping Manchester and towns across the Dubuque region build capacity to address future challenges and opportunities. These high-performing, self-determined communities were selected to leverage \$100,000 challenge grants from an anonymous donor to build a \$450,000 endowment that will pay out every year to support community building efforts. The process also builds leadership capacity and engages the whole community in assessing and responding to needs.

“As we reflect on the 20th year of the Community Foundation, we made an early commitment to

‘the greater’ Dubuque region,” says MJ Smith, senior affiliate advisor. “We started advisory boards in seven counties to help build endowments and provide strategic grantmaking. Our next phase is to build strong, vibrant rural communities.”

Manchester is experiencing the benefits of the Small-town Dreams Initiative. An initial survey received over 300 responses from residents expressing what they would like to see in their community. From there, the Manchester Vitality leadership team narrowed the focus to enhancing the downtown by making it more welcoming.

To kick off the effort, the Manchester team drew on early dollars to hang flower baskets throughout the downtown, something the city has wanted to do but couldn’t due to lack of funding. Larger grants to tackle community issues are on the horizon.

That ease of fundraising speaks to the passion many rural residents have for their communities. Through the Small-town Dreams Initiative, the Foundation helps towns channel that passion to create vitality and achieve what is important to them. “This is an endeavor that leaves a lasting mark,” says MJ. “It’s a way to bless the whole community’s future.”



Jane Mueller



Abhay Rawal



TOGETHER for Dubuque's Future.

Our Forever Fund

Everyone has their own journey with unique experiences. As our lives intersect with others, we discover we share the same passions and values. This is the case with Community Foundation board members **Jane Mueller** and **Abhay Rawal**.

Jane grew up in Dubuque during the 1980s when it was experiencing tough times. She was proud to call it home then and, after raising a family, is still proud to call it home today. Her board colleague Abhay moved to the city over a decade ago and feels like he has found a place where he and his wife have been able to settle and comfortably raise their daughter.

Both have seen remarkable change, including an economic turnaround and a move toward inclusivity among its diversifying population. Jane and Abhay attribute this progress to the generosity and tenacity of the community as well as the Foundation's leadership — and they want to see it continue for future families and generations. Today, they are two of the many people investing in Dubuque's future by supporting the **Forever Fund**.

"Every so often, something happens that inspires me make a gift to the Forever Fund," says Abhay. "It's about Dubuque's long-term well-being. I want to support nonprofits in serving people into the future."

The Forever Fund allows the Foundation to strategically deploy resources as challenges and opportunities arise. Gifts from individuals like Abhay and Jane are pooled together and invested, and as the fund grows, it pays out a percentage annually to benefit the community.

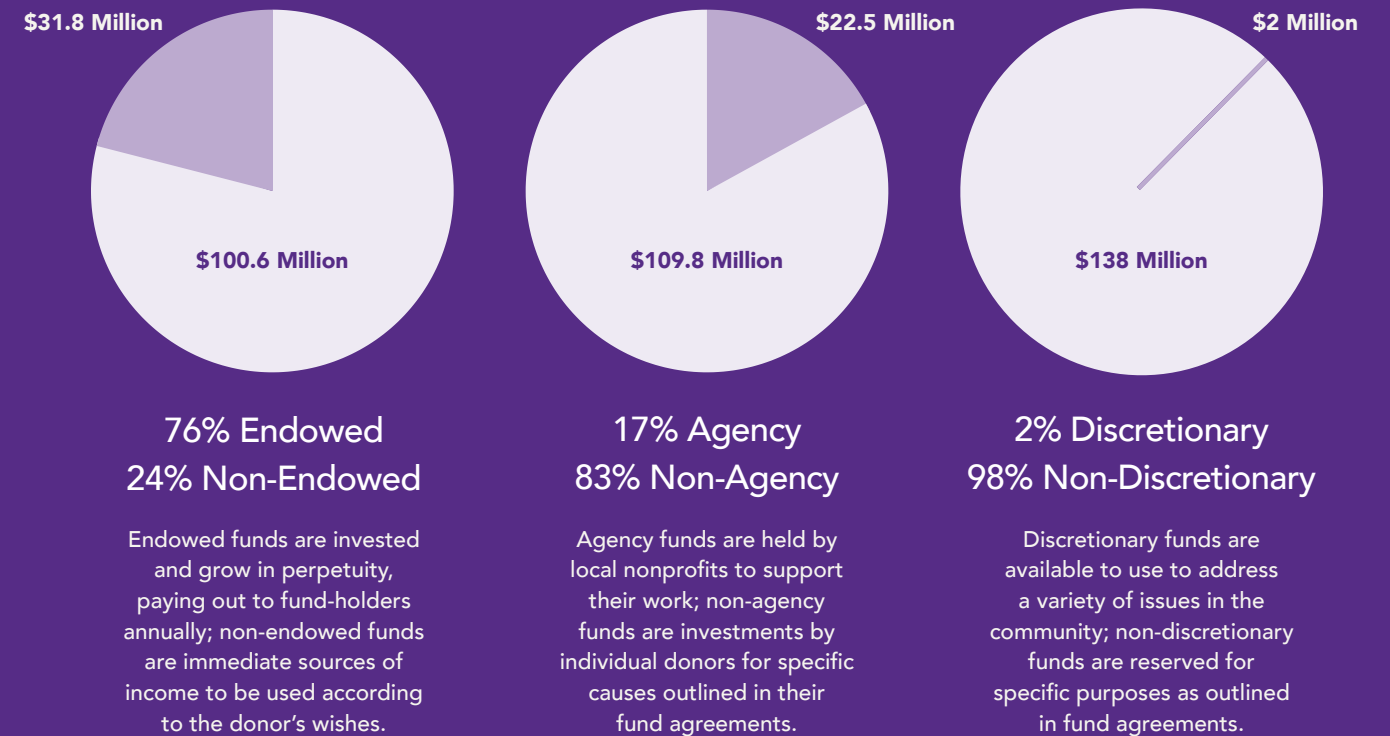
With this fund, a 20-year history of inspiring giving, and a network of passionate community advocates like Jane and Abhay, the Foundation has the infrastructure to strengthen nonprofits and tackle complex issues for generations to come.

"Dubuque has been an amazing place to raise my children," says Jane. "My hope is that Dubuque continues to be a thriving community, full of opportunity, culture and inclusion — for my children and my children's children. My husband and I support the Community Foundation and the Forever Fund to help ensure that dream long after I am gone."

[Learn more dbqfoundation.org](https://dbqfoundation.org)

Our 2022 Financial Summary

\$132.3M **\$15.2M** **\$5.7M**
TOTAL ASSETS TOTAL GIFTS RECEIVED TOTAL GRANTS AWARDED



PERFORMANCE COMPARISON	YTD	5-Year Annualized	10-Year Annualized
Community Foundation of Greater Dubuque	-14.22%	3.92%	6.93%
Institutional Custom D Portfolio Blend	-13.20%	4.16%	5.95%

Institutional Custom D Portfolio Blend is a segment blended benchmark based on historical asset class targets for the MIAS D composite using Morningstar peer group average returns, net of management fees.

All funds hosted by the Community Foundation make a direct impact on nonprofits and residents in our region. However, most of these assets are held in donor-advised funds, nonprofit funds and other types of funds that are designated for specific programs and causes. A small percentage is reserved to address needs as they arise.

Leading Our Region **TOGETHER.**

Our Board of Directors

Throughout its 20-year history, the Community Foundation has established a tradition of attracting generous, passionate volunteers to lead the organization and build a strong Dubuque region.

In 2003, a group of driven community members dreamed big and took a risk establishing something that was new to many in Dubuque — a foundation that could help people invest in the place they call home. That visionary spirit is alive and well among the board members leading the Foundation today as it tackles systemic community issues and strengthens the region for the future.

“When we started the Foundation, it was a simple idea: People didn’t have a vehicle for leaving money to the community when they died,” says founding board member **John O’Connor**.

“They lived in this community, they wanted to take care of this community, but they didn’t have the means to establish their own foundation.

“The community foundation concept created a mechanism for them to use, but it has expanded greatly from that little idea to something much bigger and, really, much better.”

Today, new board members are building on the groundwork laid by the founders, steering a leadership organization that bridges community needs with local generosity to foster a place where all people can access resources and opportunities.

“Nobody gets to where they are without some type of help, and I believe that has a lot to do with community members giving back and volunteering their time,” says **Danielle Moore**, who joined the board in 2022 and serves as manager of global parts order fulfillment for John Deere Dubuque Works.

When the opportunity came to volunteer on the board, Danielle didn’t have to think twice. Since moving to Dubuque in 2005 for a John Deere internship, Danielle became immersed in the community. Not only has she stayed with the same employer all these years, but she also put down roots. She started a family, became a mentor to teen girls at Hempstead High School, and tutored students at Northeast Iowa Community College.

She has seen the Community Foundation at the forefront of strengthening the Dubuque region and was eager to be part of the region’s transformation.

“I’m passionate about lifting up the most vulnerable people in our community,” Danielle says. “The Foundation is positioned to do this because of its track record and the vision of its leaders. Board members are going out in the community and using their resources, knowledge and relationships to secure funding that addresses the needs of local people.”

Learn more dbqfoundation.org



Our Board Members

ARE ENGAGED WITH
COMMUNITY ISSUES
AS PHILANTHROPISTS,
VOLUNTEERS AND
PUBLIC SERVANTS.

24

Board and Committee
Meetings in 2022

5

Board Committees

18

Community organizations
and businesses represented
by board members

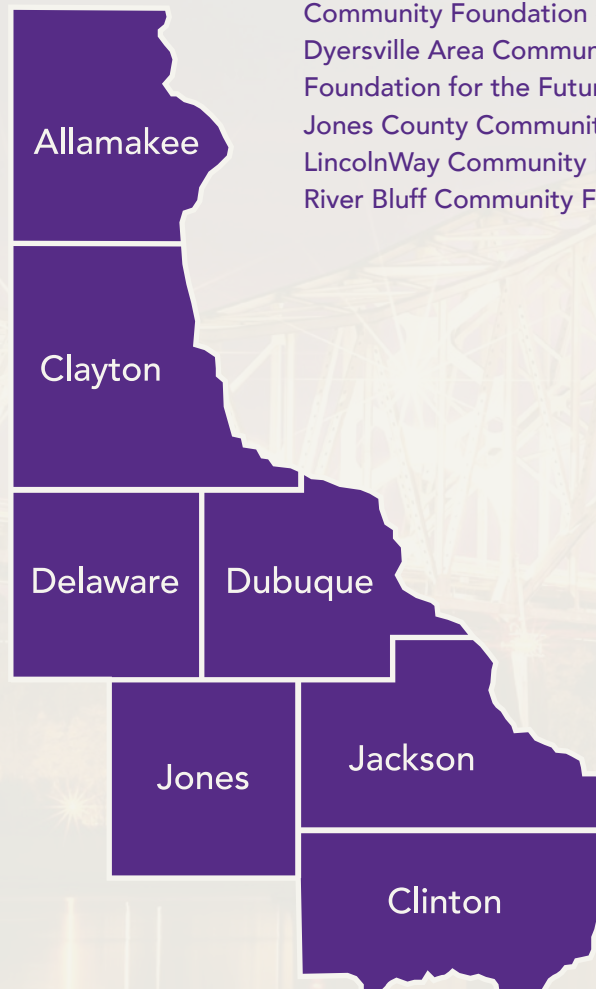
100%

Board participation in
the Forever Fund

TOGETHER WITH OUR EIGHT

Affiliate Foundations

Allamakee County Community Foundation
Clayton County Foundation for the Future
Community Foundation of Jackson County
Dyersville Area Community Foundation
Foundation for the Future of Delaware County
Jones County Community Foundation
LincolnWay Community Foundation
River Bluff Community Foundation



Seven Counties United.

We are proud to partner with leaders
like you across our region.

“Let’s journey to
forever **TOGETHER.**”

The Board of Directors and entire team at the
Community Foundation thank you for considering a
gift to the **Forever Fund.**





Roshek Building, Suite 195
700 Locust Street
Dubuque, IA 52001

Our Board of Directors

Imagine what we can accomplish when we work **TOGETHER.**

Terry Friedman

Chair
The Friedman Group, Inc.
(Retired)

Chris Corken

Vice Chair
Dubuque County Attorney
(Retired)

Jane Mueller

Treasurer
Cottingham & Butler
(Retired)

Bob Hoefer

Secretary
Dupaco Community Credit Union
(Retired)

Teri Zuccaro

Immediate Past Chair
University of Dubuque

Nicole Brehm

Dubuque Police Department

Chad Chandlee

Kendall Hunt Publishing

Mike Doyle

Steele Capital Management

Nancy Dunkel

Community Leader

Jim Gantz

Lime Rock Springs Co.
(Retired)

Nic Hockenberry

Greater Dubuque Development Corp.

Natalie Hoffmann

HK Payroll Services, Inc.

Steve Kahler

Schoenthaler, Bartlet, Kahler & Reicks

Mariann Kurtz Weber

Clarke University

Danielle Moore

John Deere Dubuque Works

Abhay Rawal

John Deere Dubuque Works

Kurt Strand

National Mississippi River
Museum & Aquarium

Cheryl Syke

Medical Associates

Chris Theisen

Theisen's Home•Farm•Auto

Nancy Van Milligen

President and CEO
Community Foundation of
Greater Dubuque

dbqfoundation.org | 563.588.2700